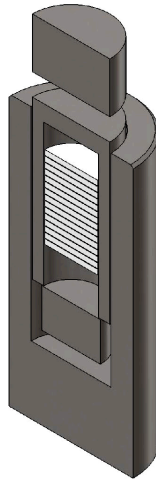




SPEC Iridium-192 Sources

Iridium-192 is the most commonly used isotope for industrial radiography. Iridium-192 is versatile and ideal for most industrial radiography applications especially pipelines and petrochemical plants. Iridium-192 provides better contrast sensitivity for thicker materials (1 inch; 25.4mm) in comparison to Selenium-75, which tests relatively thin materials. SPEC also offers enriched Iridium-192 as an alternative for customers who require smaller focal sizes and provides similar contrast sensitivity.



SPEC ¹⁹²Iridium Sources have an optimized focal size and are doubly encapsulated.

IRIDIUM-192 SOURCE MODEL INFORMATION

EXPOSURE DEVICES	 THE ABOVE CABLE END REQUIRES THE BELOW FAIL-SAFE SOURCE CONNECTOR	 THE ABOVE CABLE END REQUIRES THE BELOW BALL & SOCKET SOURCE CONNECTOR	NO SOURCE CONNECTOR REQUIRED	MAX ACTIVITY	SOURCE EXCHANGER
SPEC-150	G-60	N/A		150	SPEC C-1
Sentinel® (QSA Global) 660B	T-5F	T-5		140	SPEC C-1
Sentinel® (QSA Global) 880 Delta	T-5F	T-5		150	SPEC C-1
Sentinel® (QSA Global) 880 Elite	T-5F	T-5		50	SPEC C-1
IR-100	G-40F	G-40T		120	SPEC C-1
SPEC 2-T	G-1F or G-3F	G-1T		220	SPEC C-1
Gamma Century, S & S Universal	G-1F, G-3F	N/A		100	SPEC C-1
Gamma Pipeliner 1			G-23	100	N/A
Gamma Pipeliner 201			G-38	200	N/A
Automation 520	B-16F	B-16T		100	SPEC C-1
Sentinel® (QSA Global) 660, 660A	T-5F	T-5		120	SPEC C-1
Sentinel® (QSA Global) 533	T-1, T-1F			120	SPEC C-1
Sentinel® (QSA Global) 683			T-6	100	SPEC C-1

IRIDIUM-192 PHYSICAL DATA

Half-life:	73.83 days
Exposure Rate Constant	400mR-m ² /hr-Ci
Energy Range	295-612 keV

AVAILABLE SOURCE SIZES AND ACTIVITIES

EXPECTED ACTIVITY (Ci)	NATURAL FOCAL SIZE (in)	ENRICHED FOCAL SIZE (in)
50	0.117	0.089
80	0.133	0.099
100	0.146	0.109
120	0.160	0.120
140	0.176	0.135
150	0.184	0.140

